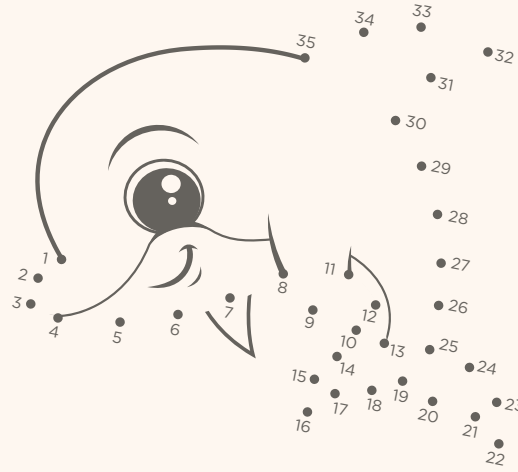


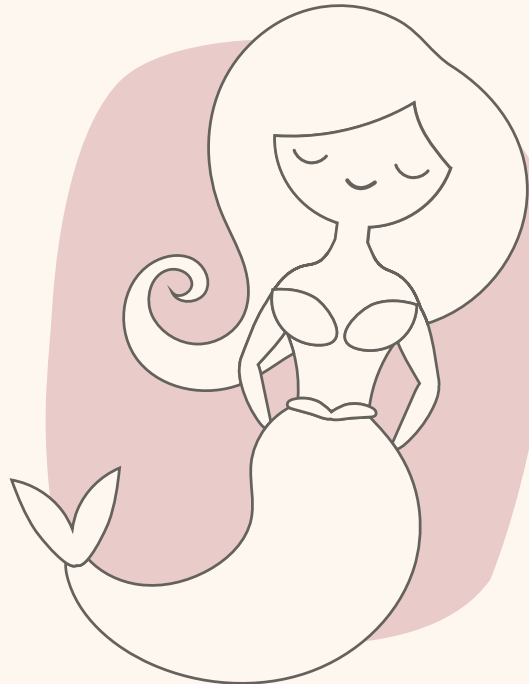


# FAMILY

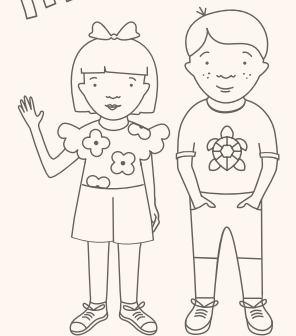
by JW



Decorate the mermaid's tail to make it look magical.



Help Billie and Allie find their favorite beach vacation activities?



## LUNCH & DINNER | 18

Includes your choice of one food item and one beverage

Served with fruit and a take-away cookie

### BIG, STRONG & ACTIVE

Served with fries and steamed broccoli

**Hamburger** DF

**Cheeseburger**

**Chicken Tenders**

**Grilled Cheese Sandwich** V

**Grilled Hotdog** DF

### ALL GROWN UP

**Grilled Chicken Breast** GF DF

Steamed broccoli, jasmine rice

**Lentils & Sweet Potato** N

Red bell peppers, coconut milk, jasmine rice, naan bread

### NOT SO USUAL

**Pork Belly Bao Buns** DF

Sweet BBQ, cucumber, lettuce

### LOCAL ADVENTURER

**Baked Mahi Mahi** GF DF

Steamed green beans, roasted fingerling potatoes

## BIG SQUEEZE

Freshly squeezed orange juice, apple juice, chocolate milk, whole milk, lemonade

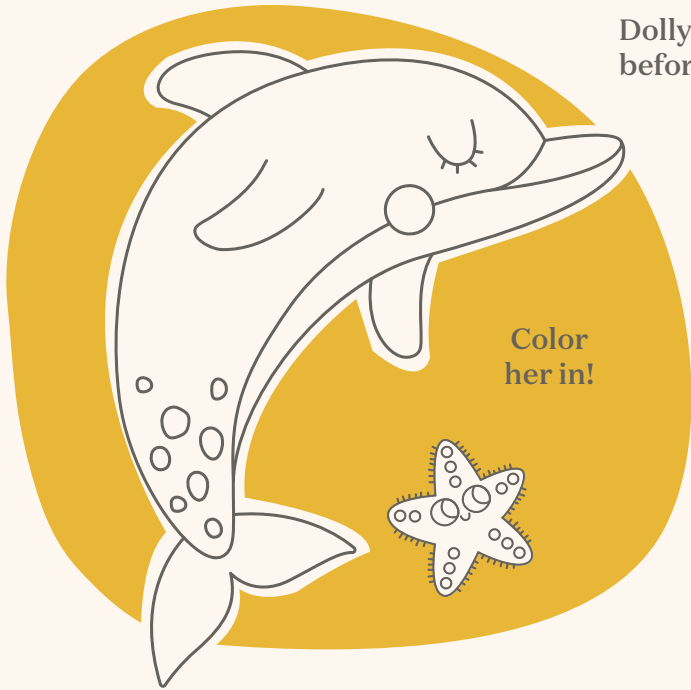


V | VEGETARIAN • N | NUTS  
GF | GLUTEN FREE • DF | DAIRY FREE

Please notify your server of any allergies.

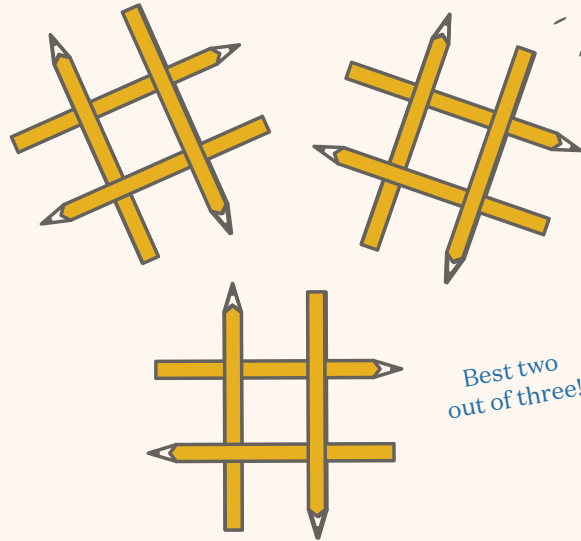


# Kane



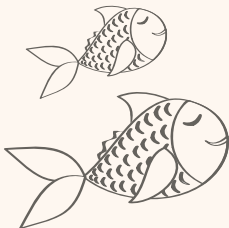
Dolly the dolphin likes to play games and color before she eats. Do you want to play too?

Color her in!



Best two out of three!

Decorate these ice cream treats with your favorite colors, sprinkles, and toppings!



### Day At The Beach

Unscramble the beach words.

- UNS \_\_\_\_\_
- DSNA \_\_\_\_\_
- HBECA \_\_\_\_\_
- WVAES \_\_\_\_\_
- LOWTE \_\_\_\_\_
- LSEVOH \_\_\_\_\_
- CEBUTK \_\_\_\_\_
- SDNA TALECS \_\_\_\_\_
- ESA LSHEL \_\_\_\_\_
- REMMIDA \_\_\_\_\_
- OECAN \_\_\_\_\_
- SHIF \_\_\_\_\_

### Fruit Frenzy Crossword

Write the correct fruit names with one letter in each box.

- 1 Monkeys love this long yellow fruit.
- 2 Spiky on the outside, sweet on the inside.
- 3 A round orange fruit that grows on trees.
- 4 Tiny fruit that grows in bunches.
- 5 It's soft, has fuzzy skin and a big pit inside.
- 6 A juicy yellow fruit that's sour.

Answers: 1Banana, 2Pineapple, 3Orange, 4Grape, 5Peach, 6Lemon